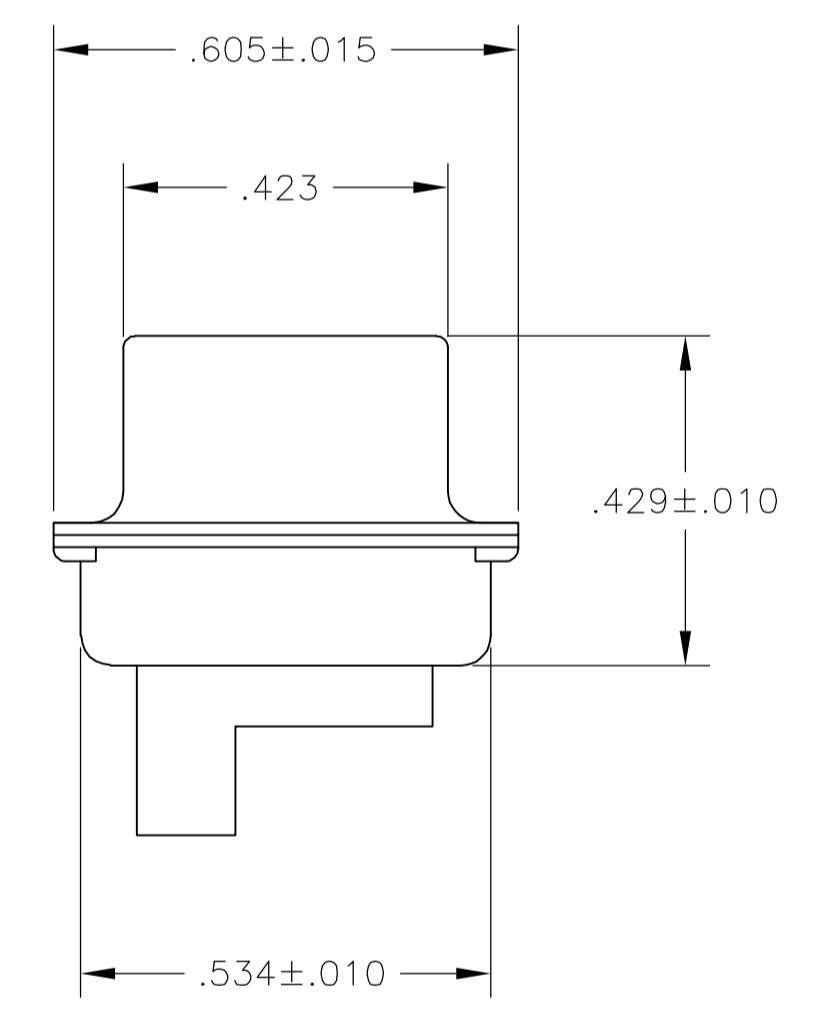
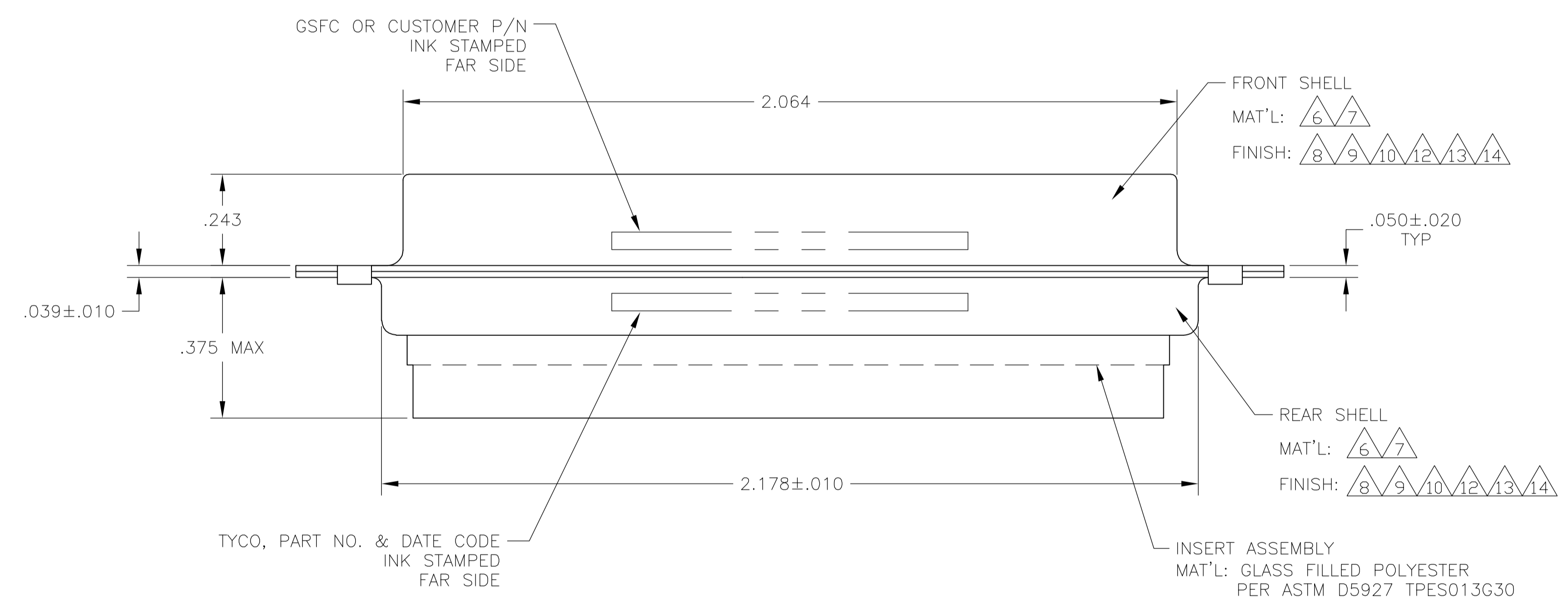
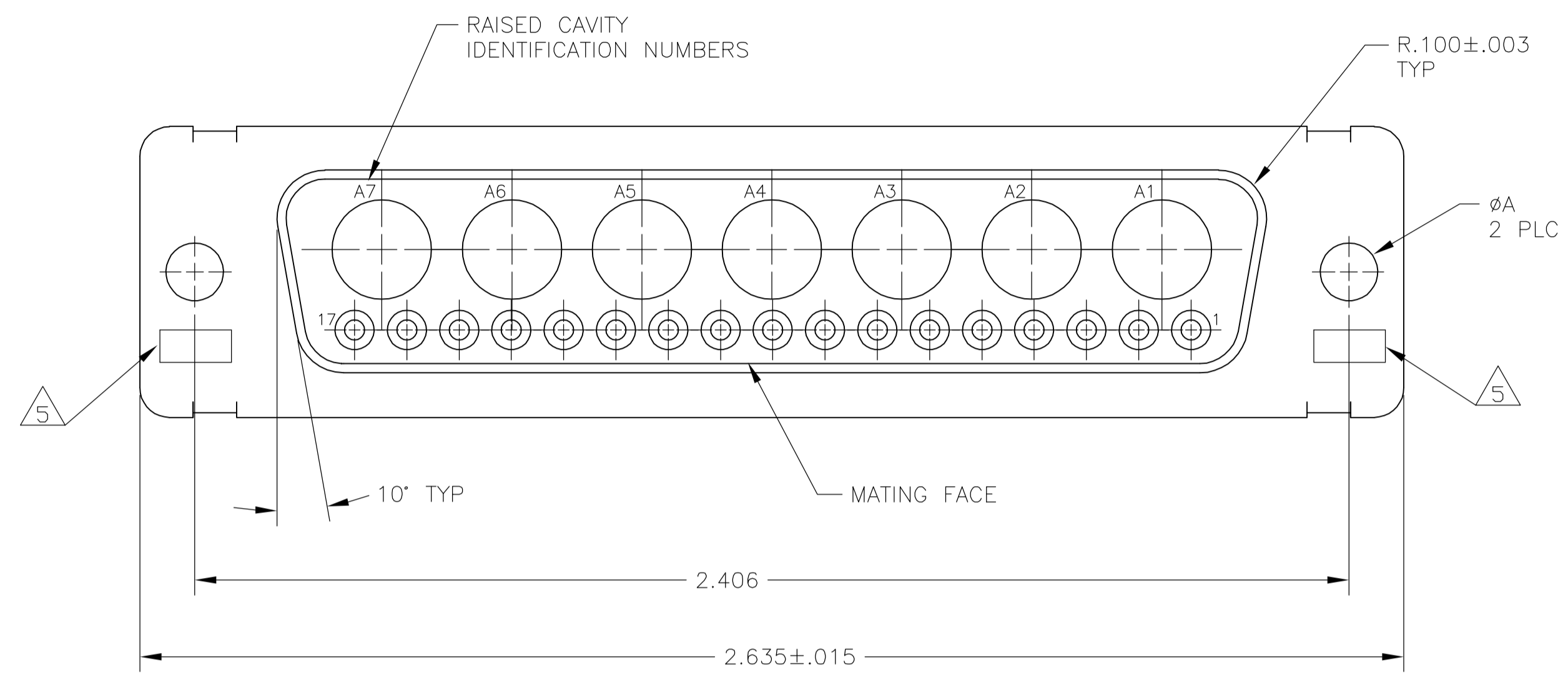


LOC	DIST	REVISIONS					
DF	DO	REV	PER	DESCRIPTION	DATE	DWN	APVD
M		REV PER	ECR-05-014837		28DEC05	PY	DM

- THIS RECEPTACLE WILL MATE WITH ANY 24C7, SIZE 5 PLUG IN AMPLIMITE SERIES.
  - MAXIMUM WIRE INSULATION TO BE USED WITH THIS RECEPTACLE IS  $\phi$ .068.
  - THIS CONNECTOR ACCEPTS (7) POWER 8, OR COAX SOCKET CONTACTS IN POSITIONS A1 THRU A7, PURCHASED SEPARATELY.
  - THIS CONNECTOR ACCEPTS SIZE 20 SOCKET CONTACTS IN POSITIONS 1 THRU 17, PURCHASED SEPARATELY.
- 5 UL/CSA DESIGNATION STAMPED IN THIS AREA, OPTIONAL.
  - 6 MATERIAL: STEEL PER ASTM-A-109.
  - 7 MATERIAL: BRASS PER MIL-C-50 AND ASTM-B-36 UNS NO. C26000.
  - 8 FINISH: TIN PER ASTM-B-545 .000200 MIN THK OVER COPPER PER AMS2418 .000100-.000200 THK OR TIN-LEAD 93/7 .000200 MIN THK OVER COPPER PER AMS2418 .000100-.000200 THK.
  - 9 FINISH: CADMIUM PLATED PER QQ-P-416.
  - 10 FINISH: GOLD PER MIL-G-45204 TYPE II, GRADE C, CLASS 1 OVER COPPER PER MIL-C-14550, CLASS IV.
  - 11 INK STAMP WESTINGHOUSE PART NO. 97942-645A935H03, FAR SIDE.
  - 12 FINISH: TIN PER ASTM-B-545 .000200 MIN THK OVER COPPER PER AMS2418 .000100-.000200 THK.
  - 13 FINISH: BRIGHT TIN PER ASTM-B-545 .000400-.000550 THK OVER COPPER PER AMS2418 .000050 MIN THK.
  - 14 FINISH: ZINC PLATE PER ASTM-B-633, .000200-.000400 THK WITH SUPPLEMENTARY CHROMATE (Cr3+)



6, 12	.120	-	5-208552-4
6, 14	.120	-	5-208552-1
6, 13	.120	-	208552-6
7, 10	.154	311P405-22S-B-15	208552-5
6, 8	.120	-	208552-4
6, 9, 11	.120	-	208552-3
7, 10	.120	311P405-22S-B-12	208552-2
6, 9	.120	-	208552-1
REMARKS	øA	GSFC P/N	PART NO.

THIS DRAWING IS A CONTROLLED DOCUMENT.

DIMENSIONS: INCHES	TOLERANCES UNLESS OTHERWISE SPECIFIED:	0 PLC ± -	1 PLC ± -	2 PLC ± -	3 PLC ± .005(0.13)	4 PLC ± -	ANGLES ± 0°30'
--------------------	----------------------------------------	-----------	-----------	-----------	--------------------	-----------	----------------

MATERIAL	FINISH	WEIGHT	SCALE	SHEET	REV
-	-	-	4:1	1 OF 1	M

APPROVED: A. EMADI, 27-JAN-88

DESIGNED: T. SHUEY, 07-JAN-88

TYCO Electronics Corporation, Harrisburg, Pa 17105-3608

RECEPTACLE ASSEMBLY AMPLIMITE 24C7 SIZE 5, COAX MIX

SIZE: A1, CASE CODE: 00779, DRAWING NO: 208552

CUSTOMER DRAWING